

## Asthma Policy

<b>Author</b>	C Massey
<b>Date</b>	June 2020
<b>Version</b>	7
<b>Approved Date</b>	July 2020
<b>Review Date</b>	June 2022

## The Context to the Policy

- 1 This school recognises that asthma is a widespread, serious, but controllable condition affecting many students at the school. The school positively welcomes all students with asthma, ensuring they are able to participate fully in all aspects of school life in school and out of school activities. This school encourages students with asthma to achieve their potential in all aspects of school life by having a clear policy that is understood. It is recognised that students with asthma may need immediate access to reliever inhalers at short notice. All staff are made aware of students who have been diagnosed with asthma and are aware of the procedure to follow in the event of an emergency. First aid staff will ensure that up to date records are kept of students' asthma medications and works in partnership with medical professionals, school nurses and parents / carers.

## Asthma Medicines

- 2 Immediate access to reliever medicines is essential. Students with asthma must carry their reliever inhaler with them at all times, including off-site activities and trips.
- 3 Parents/carers are encouraged to provide the school with a labelled spare reliever inhaler. This will be stored in the first aid room separately in case the student's own inhaler runs out, or is lost or forgotten. All inhalers must display a Pharmacist label showing the child's name.

## Record Keeping

- 4 When a student joins the school, parents/carers are asked if their child has any medical conditions, including asthma, on their medical form in their induction booklet. It is the parent/carer's responsibility to ensure the school are kept up to date with their child's medical needs and that the form is accurately completed.
- 5 All parents/carers of children with asthma will be required to complete an asthma declaration form as part of the induction booklet. A database will be established accessible to all staff. This will be updated annually or if the prescription changes. If the latter occurs it is the parent/carer's responsibility to notify the school.

## Exercise and Activity – PE and Games

- 6 Taking part in sports, games and activities is an important part of school life for all students. Staff are made aware of students in school who suffer from asthma.

PE teachers will make all students aware that those students whose asthma is triggered by exercise take their asthma inhaler with them to every lesson, and to thoroughly warm up and cool down before and after the lesson. It is agreed with PE staff that each student's inhaler should be labelled by the student prior to the lesson and they are expected to take it to the lesson. If a student needs to use their inhaler during a lesson they will be encouraged to do so. This information is outlined to all students in PE with a presentation at the start of each academic year.

## Out of Hours Sport

- 7 There has been a large emphasis in recent years on increasing the number of children and young people involved in exercise and sport in and outside of school. The health benefits of exercise are well documented and this is also true for children and young people with asthma.

It is therefore important that the school involves students with asthma as much as possible in after school clubs.

- 8 All staff and sport coaches will have an awareness of asthma sufferers and be aware of what to do in the case of an emergency.

## School Environment

- 9 The school seeks to ensure that the school environment is beneficial to students with asthma. Any students who believe that they are beginning to have symptoms related to an attack, should act according to their medical advice and school systems related to their symptoms. In the first instance, they should take their inhaler, leave the lesson and go accompanied to the Medical Room.

## Educational Visits

- 10 School educational visits play an integral part in a student's school life, therefore the basic principles of care apply as they would within school. It is therefore essential that each student carries their inhaler on off site visits. Students will not be allowed to attend off site activities/trips if they do not have their inhaler with them.

## Asthma attacks

- 11 Staff are aware of what to do in the event of an asthma attack.

## Asthma Care Pathway

- 12 In the event of an asthma attack the school follows the Asthma Care Pathway (Appendix 1). This procedure is visibly displayed in key areas.

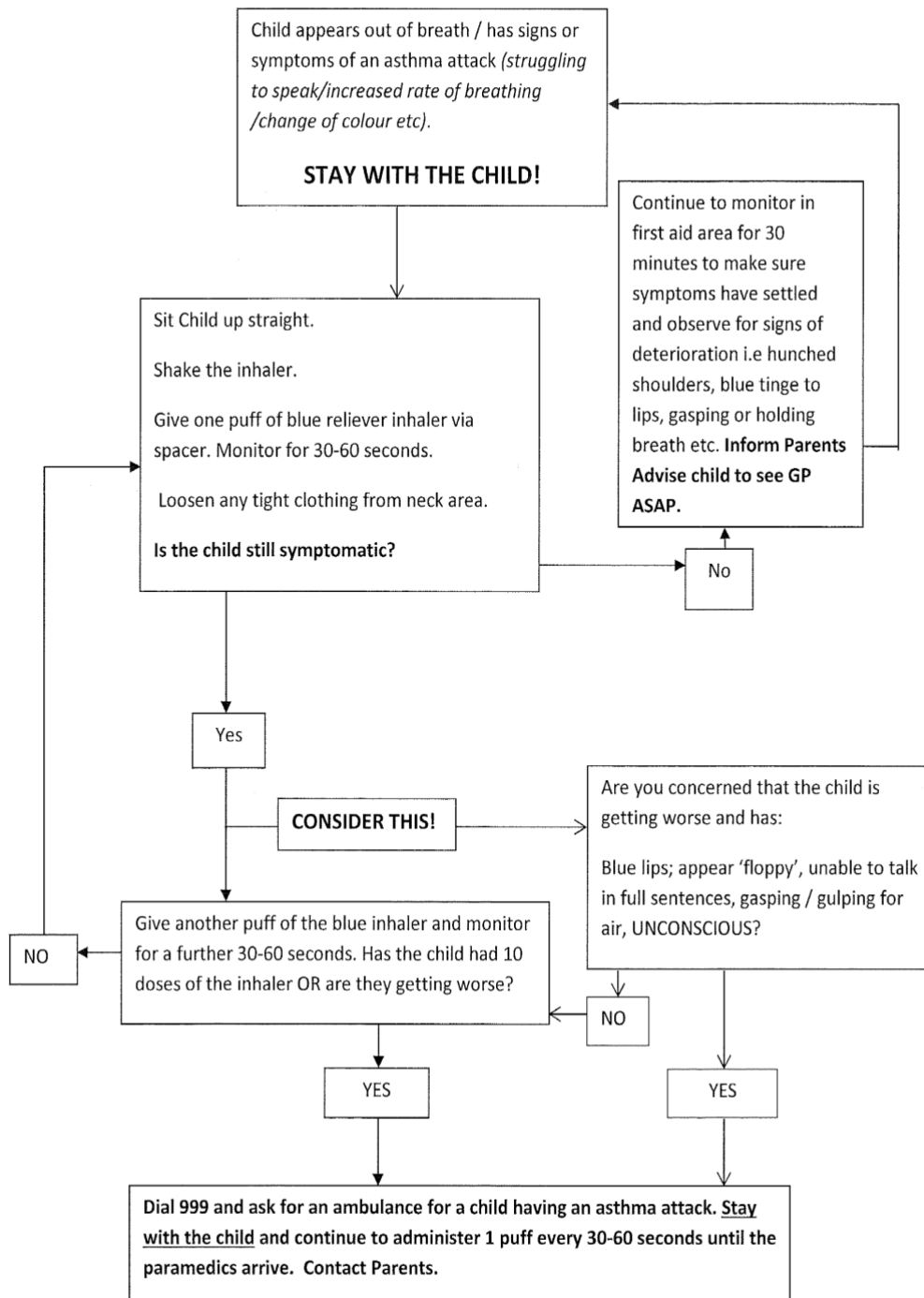
## Emergency Salbutamol Register

- 13 The school has a supply of emergency salbutamol inhalers and they are immediately accessible to First Aiders. First Aid staff maintain a register of students whose parents/carers have given consent for this to be administered in an emergency. This also forms part of the Induction Booklet that is completed when a student starts the school. It is the parent/carer's responsibility to ensure they have completed the declaration accurately. A copy of the register is clearly displayed in the First Aid Room with the supply of emergency inhalers.

# Appendix 1

## ASTHMA CARE PATHWAY

Produced inline with the Asthma UK guidelines.



Devised By Samantha Parry

Version 1.1 09/ 06/15