

## Drug Education Policy

<b>Author</b>	Ms K Read
<b>Date</b>	March 2020
<b>Version</b>	4
<b>Approved Date</b>	March 2020
<b>Review Date</b>	March 2022

## Introduction

- 1 The purpose of the drug education policy at Alderbrook School is to reinforce and safeguard the health and safety of the whole school community, including students, parents / carers, staff, governors and visitors.
- 2 Through this policy we intend to:
  - clarify the school's approach to drugs, and drug education
  - ensure that the response to incidents involving drugs complements the overall approach to drug education and the values and ethos of our school.
- 3 The aims of this policy are
  - to ensure the creation and maintenance of a successful learning environment for all.
  - to provide a calm, stable and secure environment in which students and staff can work together to realise their full potential.
  - to ensure students are offered a broad and balanced and relevant curriculum which provides a challenging programme and celebrates achievement.
- 4 Drug education is a key component in our work as part of the National Healthy Schools Programme and falls in line with the PSHCE Association Programme of Study for PSHCE Education

## Consultation

- 5 This policy has been developed through a whole school approach and through consultation with stakeholders. Consultation has happened through questionnaires to staff and students and through activities with students in year 9 during the calendar year 2018. Parents / carers have had the opportunity to contribute to the questionnaire through e-mail. Staff have contributed to a questionnaire on the school intranet. The responses to all of this consultation continues to shape the policy and provision in school. This policy has been developed with support from an advisor in Solihull MBC and the PSHE Association. This is in line with the new statutory government framework which comes into effect from September 2020.

## Definitions

- 6 A drugs is a substance people take to change the way they feel, think or behave. The term drugs and drug education unless otherwise stated, are used throughout this document to refer to all drugs:-
  - All illegal drugs, i.e. those controlled under the Misuse of Drugs Act, such as cannabis, heroin, cocaine, crack, magic mushrooms, LSD and amphetamine
  - All legal drugs such as alcohol, tobacco, volatile substances (solvents), caffeine (as in soft drinks, tea and coffee and caffeine tablets), nitrites (poppers)
  - All prescription, over-the-counter and off-the-shelf medicines, as well as many herbal remedies.
  - Legal highs

## General Principles

- 7 The school is totally opposed to the misuse and illegal supply of drugs, alcohol and tobacco. Through our pastoral programme, PSHCE, assemblies and the general ethos of the school, we aim to enable our students to make healthy, informed choices, and to encourage students in need of support to seek help.

- 8 Students will be properly informed about the dangers of substance misuse through the pastoral system, PSHCE days, assemblies and lessons and within specific curriculum areas (e.g. Science).
- 9 The school encourages students to make informed choices by increasing knowledge and challenging attitudes.
- 10 We aim to increase understanding of related health and social issues e.g. crime, sex and sexuality/unsafe sex, sexually transmitted infections, HIV and AIDS. This is achieved through PSHCE lessons, Life Ready Days and the Assembly Programme.

## Drug Education Programme

### Aims and approach

- 11 The purpose of Drug Education is to provide opportunities for students to develop their knowledge, skills, attitudes and understanding about drugs, and appreciate the benefits of a healthy lifestyle relating this to their own and others' actions. PSHCE lessons and Life Ready Days provide an effective context for drug education because they focus on developing skills and exploring attitudes as well as learning about healthy and safe lifestyles.
- 12 Drug education is taught through a comprehensive PSHCE programme. Students receive drugs education in PSHCE lessons as part of the Health and Wellbeing module. Whilst there are specific Drugs units of work the skills which are developed through PSHCE are an important part of drug education. This is further reinforced with Life Ready Days and assemblies on drug education.
- 13 Where necessary, students should be signposted to relevant people and agencies who can further support them with drug issues. Drug Education should increase students' knowledge and understanding and clarify misconceptions about:
  - The short and long-term effects and risks of drugs
  - The consequence of drug use
  - The rules and laws relating to drugs
  - The impact of drugs on individuals, families and communities
  - The prevalence and acceptability of drug use amongst peers
  - The complex moral, social, emotional and political issues surrounding drugs
- 14 We aim to develop students' personal and social skills to enable them to make informed decisions and keep themselves safe and healthy, including:
  - Assessing, avoiding and managing low, medium and high risk behaviours
  - Communicating effectively
  - Resisting pressures
  - Finding information, help and advice
  - Devising problem-solving and coping strategies
  - Developing self-awareness and self esteem
  - Exploring their own and other people's attitudes towards drugs, drug use and drug users
  - Challenging stereotypes, and exploring media and social influences

### What constitutes a Drug Related Incident?

- 15 This term refers to incidents inside and outside school involving members of the school community. An incident may occur on school premises at any time, or during an out of school activity organised by the school (e.g, a school trip, one-day or residential). Drug related incidents might include:-
- Drugs or associated paraphernalia are found on school premises
  - A student is found in possession of drugs or associated paraphernalia
  - A student, parent/carer, staff member, visitor is found to be supplying drugs on school premises
  - A student, parent/carer, staff member, visitor is thought to be under the influence of drugs
  - Students and/or teachers feel threatened by another student because of altered personality states and irrational or bizarre behaviour which falls outside what is normal for that child.
  - A staff member has information that the illegitimate sale or supply of drugs is taking place in the local area involving a student
  - A student discloses that they or a family member/friend are misusing drugs

### Medical Emergencies

- 16 In every case of an incident involving drugs, our priority will be safety, meeting any medical emergencies with first aid and summoning appropriate help. See Appendix 1

### Establishing the Nature of the Incident

- 17 A careful investigation will take place to judge the nature and seriousness of the incident. This investigation will be led by the Senior Leadership Team/Head Teacher. The emphasis will be on asking open-ended questions. A second adult will be present, where possible. Careful attention will be given to respecting the confidentiality of those involved.

### Confidentiality

- 18 All schools are required by the Education and Inspections Act 2006 to 'promote the well-being of students at the school'. We are committed to the well-being of our students and we therefore actively signpost confidential support services that can be accessed by our students.
- 19 In the classroom, the aim is to strike a balance between helping students to feel respected, safe and able to participate fully and openly while still protecting privacy and safeguarding welfare.
- 20 Effective teaching and learning in PSHCE actively encourages students to share thoughts and voice opinions, so it is important to establish boundaries and clarify at the outset with students what will happen to any personal information they might disclose in the classroom. Within school, the following protocol must be followed:
- Staff in school can never promise unconditional or absolute confidentiality
  - Agreed ground rules will be established in the classroom to support a safe learning environment
  - Ground rules need to make explicit to students that staff have a duty to protect young people from significant harm. In such circumstances, staff will need to follow the safeguarding policy if a student makes a disclosure

### Responding to Incidents

- 21 Any response will balance the needs of the individual with those of the wider school community. We aim to provide students with the opportunity to learn from their mistakes, re-educate and to develop as individuals. A whole school approach will be used when managing these incidents.
- 22 See Appendix 1 and 4 for procedures for responding to incidents involving drugs. In case of incidents please also refer to the Behaviour policy for students or the Code of Conduct for Staff

### Parents/Carers Under the Influence of Drugs on the School Premises

- 23 When dealing with parents/carers under the influence of drugs on the school premises, staff will attempt to maintain a calm atmosphere. If a teacher has concerns about discharging a student into the care of a parent/carer, the teacher will seek appropriate support from a member of the Senior Leadership Team. At all times the safety of the student is paramount.

### Referral and External Support

- 24 See Appendix 2 and 3 for local services and national helplines/websites.

### Roles and Responsibilities

- 25 The implementation of the policy is the responsibility of all staff working within the school. It is the overall responsibility of the Senior Leadership Team to deal with drug related incidents in line with the Safeguarding and Behaviour policies.
- 26 Everyone within the school's teaching community has a role in being vigilant, and should report any suspicions of drug use a member of the pastoral team or Senior Leadership Team immediately. No-one's specific role will override a designated safeguarding lead (DSL) who will be involved where a confidential disclosure has been made relating to any safeguarding concerns .
- 27 The member of staff in charge of PSHCE is responsible for managing the PSHCE programme and providing opportunities for staff professional development

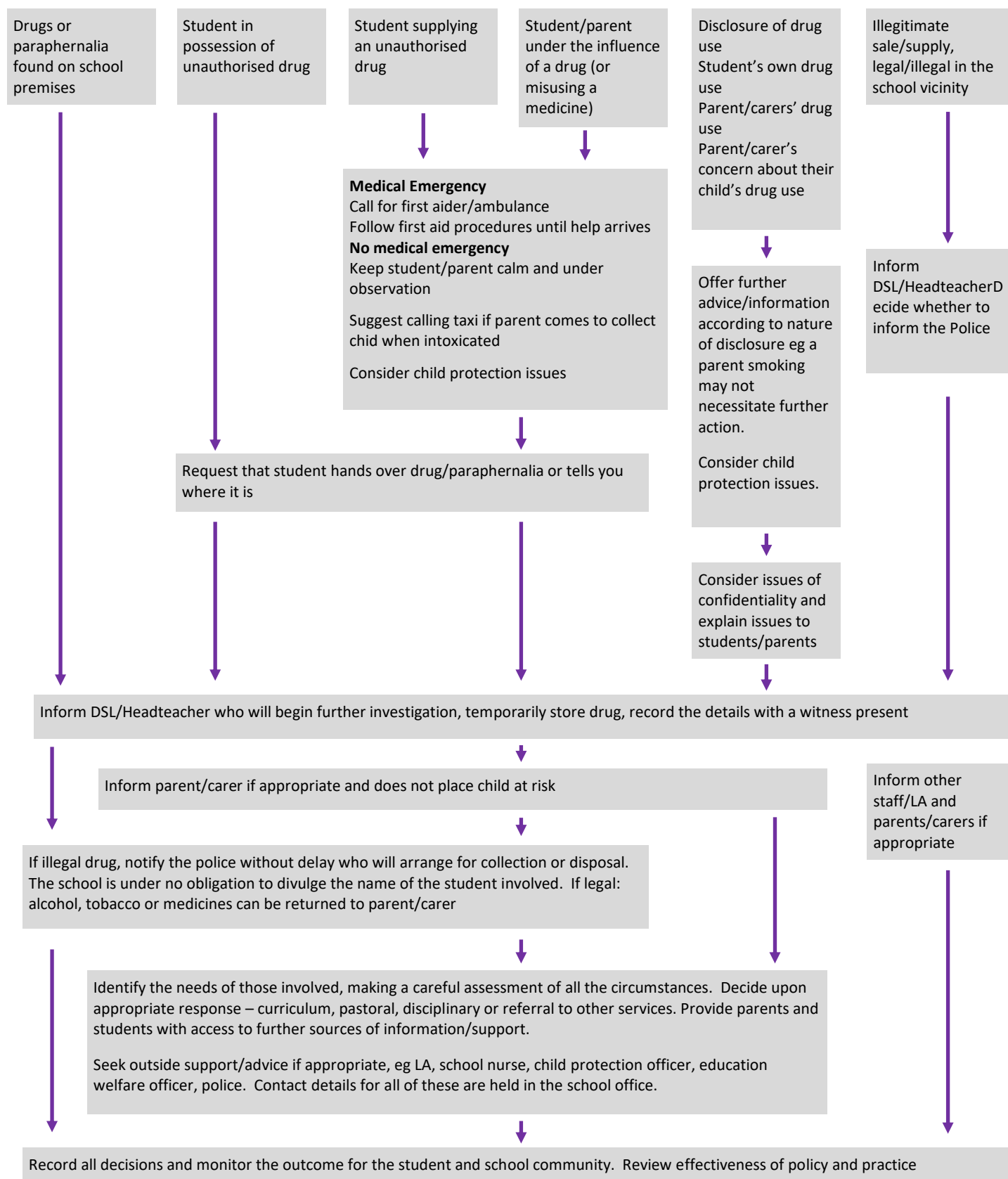
### Resources

- 28 The key principles for drug education are:
  - creating a safe learning environment by setting ground rules
  - active learning e.g. circle time, role play, create a character, discussions and debates, thought showers and mind mapping
  - continuity and progression throughout the school
  - real life impact e.g. media, theatre groups and case studies
- 29 Each teacher will have their own resources, and a master copy will be held by the PSHCE

### Monitoring, Evaluation and Review

- 30 Assessment of the drug education programme will form part of the overall assessment of PSHCE. It is the responsibility of the PSHCE curriculum leader to monitor and evaluate the provision and adjust the programme accordingly through assessment. This policy is evaluated, reviewed and amended by the PSHCE curriculum leader every two years. The new draft is then forwarded for amendment and/or approval by the governing body.

## Appendix 1 – Responding to Incidents involving drugs



*Adapted from Drugs: Guidance for Schools 2004. Please also refer to School's Behaviour Policy.*

## Appendix 2 Local support services

### Healthy School Co-ordinator

Solihull Care Trust, 2nd Floor, Mell House, 46 Drury Lane, Solihull, West Midlands  
B91 3BU. Tel: 0121 742 4534

Works closely with Healthy School Team and nurse practitioners to promote the National Healthy Schools Programme to schools, as well as auditing and Quality assuring schools who apply for National Healthy School Status, including working on drugs and Sex and Relationship Education.

### Healthy Schools Team

Natasha Chamberlain, Education Improvement Adviser, Solihull Education Improvement Service, Education and Skills Division, Solihull MBC Tel: 0121 704 6620 Mobile: 07900 138423

Advisory Teachers Team who are also part of the School Improvement and Advisory Service Quality Division. They work with Primary, Secondary, Special Schools and Pupil Referral Units on a wide variety of educational needs including Drugs, Sex and Relationships Education, Personal Social Development, Assessment as well as working with the Local Healthy Schools Co-ordinator to promote and audit Healthy School validations.

### On Track

Windy Arbor School, Woodlands Way, Chelmsley Wood, Solihull, B37 6RN Tel: 0121 788 3466

Offer support and help to children aged 4-13 and their families providing a range of group sessions in and out of school

### Str8up

Young Persons Drug and Alcohol Service, Keepers Lodge, Chelmsley Road, Chelmsley Wood, Solihull, B37 7RS Tel: 0121 788 5390

Str8Up for young people who are having difficulty with drugs, alcohol or solvents. Str8Up also provide services for children and young people affected by parental substance misuse. Str8Up services include counselling, intensive one-to-one support, activity based group work, prescribing, relapse prevention and harm reduction.

### Welcome Counselling Service

15 Larch Croft, Chelmsley Wood, Solihull, B37 7RS Tel: 0121 678 4730

Welcome is an adult service providing support, information and counselling about drugs.

### Youth Offending Team now merged with Solihull Early Help

Elmwood Place, 37 Burton Way, Smiths Wood, B36 0UG

Work on prevention of offending by children and young people, identifying and dealing with young offenders and reducing the risk of re-offending.

## Appendix 3 National sources of Drug Information

### Adfam

Tel: 020 3817 9410 [www.adfam.org.uk](http://www.adfam.org.uk)

Information and advice for parents/carers who have children experiencing drug problems

### Alcohol Concern

Tel: 0203 907 8480 [www.alcoholconcern.org.uk](http://www.alcoholconcern.org.uk) Information about alcohol

### ASH (Action on Smoking and Health)

Tel: 020 7739 5902 [www.ash.org.uk](http://www.ash.org.uk)

Information about cigarette smoking

### Frank – formerly the National Drug Helpline

Tel: 0800 776600 [www.talktofrank.com](http://www.talktofrank.com)

Free phone, confidential information and advice for young people and adults about drugs. Can also provide free drug leaflets for young people and parents/carers

### Re-Solv – (Society for the Prevention of Solvent and Volatile Substance Abuse)

Tel: 01785 817885 [www.re-solv.org](http://www.re-solv.org)

Information about solvents for professionals, parents / carers and young people



## Appendix 4      Disposal of suspected illegal drugs

School staff are permitted by law to take temporary possession of a substance suspected of being an illegal drug. In taking temporary possession and disposing of suspected illegal drugs schools are advised to

- Ensure that a second adult witness is present throughout
- Seal the sample in a plastic bag and include details of the date and time of the incident
- Store it in the secure location such as the safe
- Notify the police
- Record full details of the incident
- Inform parents/carers unless this would put the child at risk of significant harm

### Disposal of drug paraphernalia

Needles or syringes found on school premises should be placed in a sturdy secure container using gloves, for collection of the paraphernalia contact Integrated Addiction Services: 0121 678 4730

Please refer to School Behaviour Policy in cases of incidents